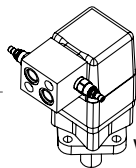
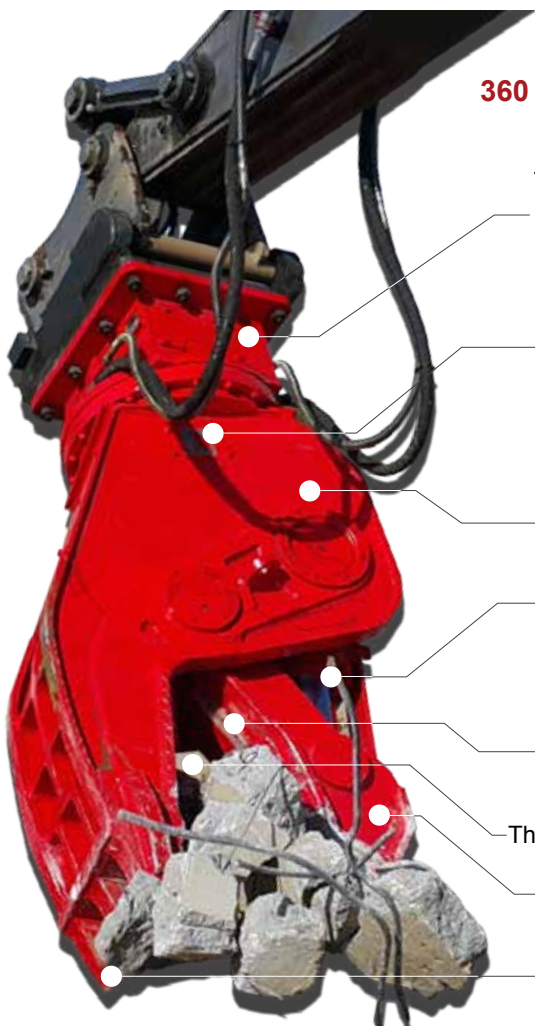
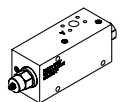


## MINI ROTATING PUVERIZER TP10RV

Designed for secondary processing to remove rebar and size concrete.  
360 degree hydraulic rotation increases productivity.



Hydraulic rotation motor equipped with dual relief valve



Cylinder mounted speed valve reduces the cycle time, and its oversized design eliminates over flow issues on carrier.

Heavy duty frame structure using high strength steel

Trunnion mounted cylinder provides a compact profile. Cylinder rod is protected by heavy duty guard

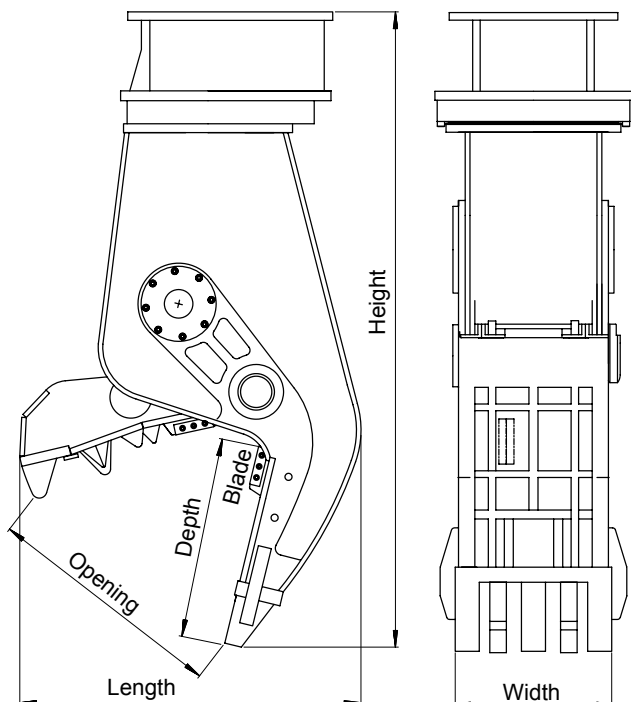
Replaceable four way turnable rebar cutting blade

The widest jaw opening in its class

Heavy duty jaw structure using abrasion-resistance steel

Abrasive resisted steel

AUTHORIZED DEALER



Model	Unit	TP10RV	Unit	TP10RV
Carrier Weight	M/T	12~20	M/T	12~20
Operating Weight	kg	830	lb	1,830
DIM	Height	1,660	inch	65
	Length	960		38
	Width	355		14
Jaw Opening	mm	700	inch	28
Jaw Depth		680		27
Blade Length		100		4.0
Cutting Force [A]		87		192
Crushing Force	[B] Mid	M/T (Metric Ton)	lb (x1000)	74
	[C] Tip			21
Rated Pressure	bar	250	psi	3,600
Rated Oil Flow	lpm	82	gpm	21
Hyd. Rotation	Pressure	bar	psi	3,000
	Oil Flow	lpm	gpm	7~8
	Speed	RPM	RPM	10~15
Cycle time	Open	sec	sec	1.8
	Close			2.3

Specifications subject to change without notice.

- Height : Flat Top Mounting
- Cycle Time : Measured at rated flow under no load.